



## Living in Harmony

HARMONI COMPRISES TWO APARTMENT BLOCKS WITH A TOTAL OF 900 UNITS OF 3-BEDROOM, 2-BATHROOM APARTMENT UNITS.

Harmoni offer access to a comprehensive range of excellent amenities including a swimming pool, children's pool and playground, gym, multi-purpose court, community hall and more.



ESTIMATED TIME\* TO ECO MAJESTIC AFTER THE COMPLETION OF THE INTERCHANGE

12<sup>MIN</sup> KAJANG      15<sup>MIN</sup> BANGI      25<sup>MIN</sup> CHERAS      27<sup>MIN</sup> PUTRAJAYA      35<sup>MIN</sup> KUALA LUMPUR



ECO MAJESTIC

KLANG VALLEY | ISKANDAR MALAYSIA | PENANG | SYDNEY | LONDON

ECO WORLD GALLERY  
 ECO MAJESTIC SDN. BHD. (1092247-X)  
 No. 1, Lingkaran Eco Majestic, Eco Majestic  
 43500 Semenyih, Selangor D.E., Malaysia  
 F 03-8723 2225 E ecomajestic@ecoworld.my

Enjoy our world-class services  
 and expert assistance every day.  
 Mondays to Fridays 9am - 6pm  
 Weekends and Public Holidays 10am - 6pm

+603 8723 2255  
 www.ecoworld.my

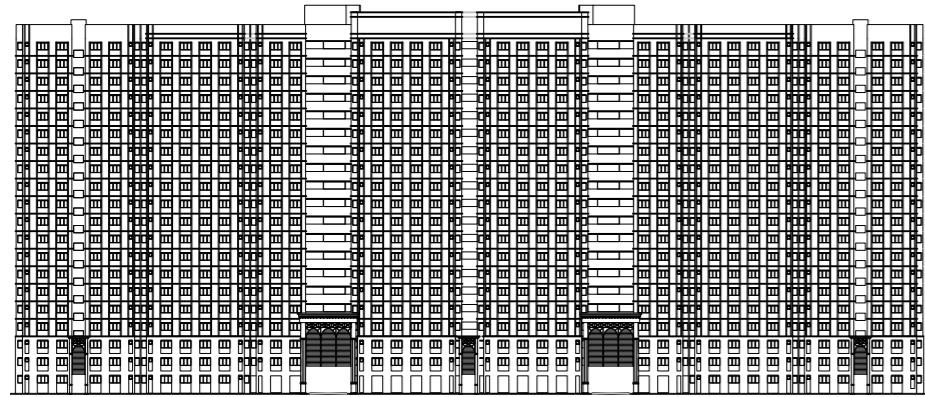
ECOWORLD  
 CREATING TOMORROW & BEYOND

# harmoni

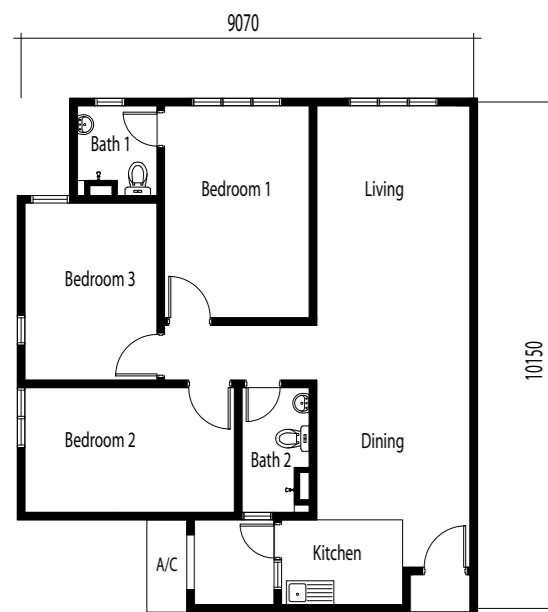
APARTMENT

Living in Harmony

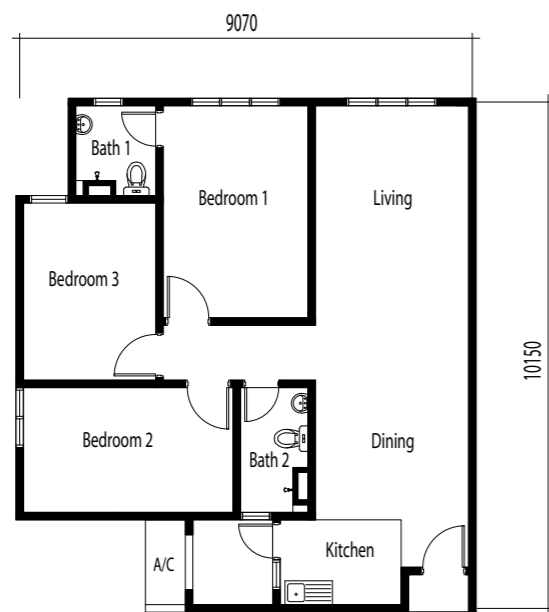
All art renderings and photographs contained in this circular are artist's impression only. The Developer reserves the right to modify any part of parts of the building prior to completion as directed or approved by the architect and/or the relevant authorities. All plans, layout, information and specifications are subject to change and cannot form part of an offer or contract presentation.



TYPE A/A1



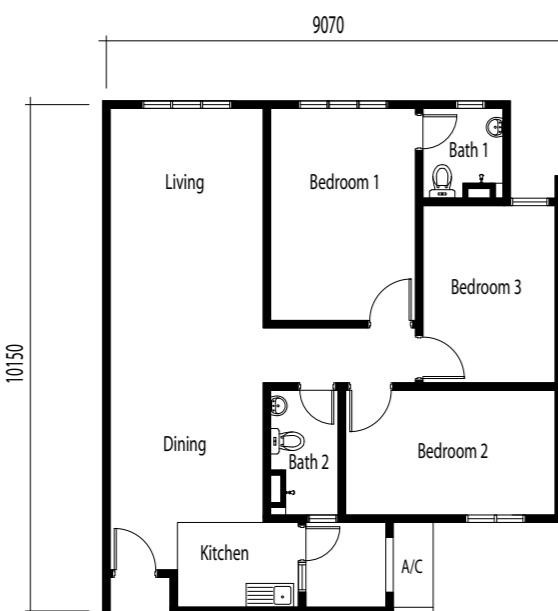
TYPE B



TYPE C



TYPE D/D1



### SITE LAYOUT PLAN

TENURE OF LAND **freehold**  
 PROJECT SITE AREA **approximately 12.86 acres**  
 NUMBER OF BLOCKS **2 blocks, 20 storeys**  
 TOTAL UNITS **900**

- Type A/A1
- Type B
- Type C
- Type D/D1
- a Playground
- b Multipurpose Court
- c Swimming Pool
- d Children Pool
- e Public Amenities
- f Guardhouse
- g Surau
- h Multi Storey Car Park
- i Covered Walkway



MASTER PLAN

### GENERAL SPECIFICATIONS

**STRUCTURE**  
Reinforced Concrete

**WALL**  
Brickwork/ Reinforced Concrete

**ROOFING MATERIAL**  
Metal Roof / Reinforced Concrete Slab

**ROOF FRAMING**  
Metal Roof Truss

**CEILING**  
Reinforced Concrete Slab

**WINDOWS**  
Metal Frame Window

**DOORS**  
Main Entrance  
Fire Rated Door  
OKU Bath (Type E, F, F1, G, H & H1)  
PVC Folding Door  
Others  
Flush Door

**IRONMONGERY**  
Standard Ironmongery

**WALL FINISHES**  
Kitchen  
1500mm High Ceramic Wall Tiles  
All Bathrooms  
1500mm High Ceramic Wall Tiles  
Others  
Plaster & Paint

**FLOOR FINISHES**  
Living / Dining  
Cement Render

Kitchen  
Ceramic Floor Tiles

Yard  
Cement Render

All Bathrooms  
Ceramic Floor Tiles

Bedroom 1, 2 & 3  
Cement Render

Others  
Cement Render

**SANITARY & PLUMBING FITTINGS**  
WCs, 2 Wash Basins, 2 Showers, 1 Kitchen Sink

**ELECTRICAL INSTALLATION**  
13 Amp Plug Point 10  
Lighting Point 11  
Ceiling Fan Point 2  
TV Point 1

**INTERNAL TELEPHONE TRUNKING & CABLING**  
Fiber Wall Socket 1

**PAINTING**  
Emulsion Paint